



LK MultiFill®

LK Armatur



LK 321 MultiFill® Solar



TECHNICAL DATA

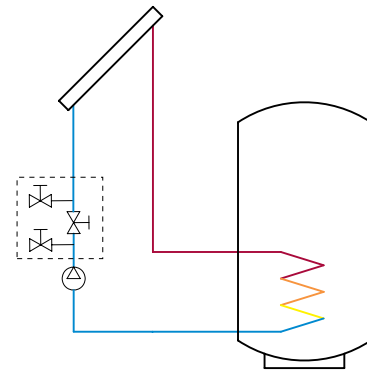
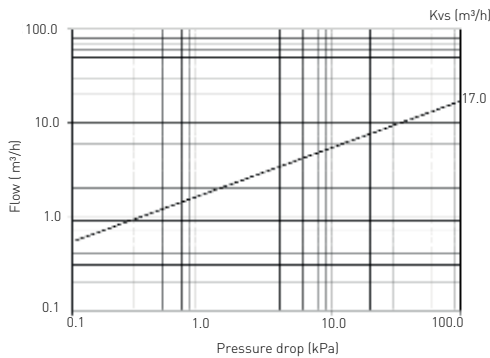
Working temperature	Min. -20 °C/Max. 120 °C (160 °C briefly)
Max. working pressure	1,0 MPa (10 bar)
Media	Water - Glycol mixture max. 50%
Thread standard	G - male thread, ISO 228/1
Material, valve body	Brass EN 12165 CW617N
Material, sealing	P.T.F.E

LK 321 MultiFill® is a compact combination valve for easy filling of solar systems. The valve's compact design makes it easy to install even in tight spaces.

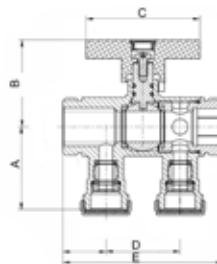
Two M 1" connections with surface for connection with flange, eg. 299189 see accessories. Two filling valves M 3/4".

The valve requires no maintenance but the installation should be checked regularly.

CAPACITY DIAGRAM



LK 321 - Male thread



Article no.	Dimension	Kvs m³/h	A mm	B mm	C mm	D mm	E mm	Weight kg
092320	M 1" x M 3/4"	17	48	50	66	43	93	0.65

SPARE PARTS AND ACCESSORIES



Article no.	Article	Position
299189	Flanged pipe - 22 mm, F 1", L=120 mm	1
013035	Gasket C4400 1"	2

LK 521 MultiFill®



TECHNICAL DATA

Working temperature	Min. -20 °C/Max. 80 °C
Max. working pressure	1.0 MPa (10 bar)
Media 1 DN25, DN32	Water - Glycol mixture max. 50%
Media 2 DN50	Water - Glycol mixture max. 30%
Media 3	Water - Ethanol mixture max. 30% (Working temperature: Max. 60 °C)
Thread standard	G - male thread
Material, valve body	Brass EN 12165 CW617N
Mesh opening, filter	Main valve DN25, DN32: 0,6 mm ² Main valve DN50: 1,0 mm ² Fillingvalve DN25, DN32: 0,7 mm ² > Fillingvalve DN50: 0,7 mm ²
Material, insulation	Expanded Polystyrene EPS
Material, filter element	Main valve: Plastic, Stainless steel Filling valve. Stainless steel
Material, sealing	EPDM

LK 521 MultiFill® is a combination valve for easy filling of refrigerant fluid into ground source heat systems. The valve has a filter to protect the evaporator against possible grit. Its compact construction allows it to be installed in tight spaces. The valve comes with an insulation to protect against condensation and possible icing. LK 521 MultiFill® can also be used in other applications where filling and filtration are required.

Arrows on the valve body indicate the direction of the flow. The enclosed insulation should be used.

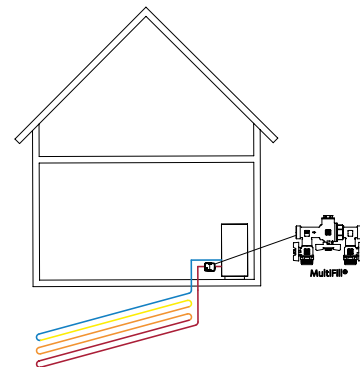
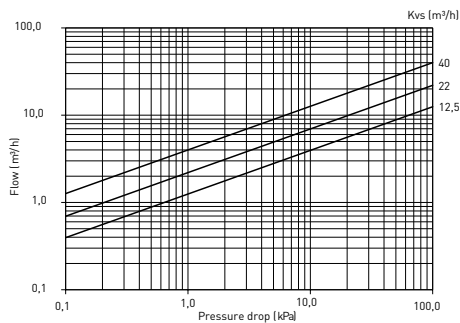
Apart from cleaning the filter no maintenance is required. The filter should be cleaned immediately after installation, a month later and then every other year or when refilling fluid to the system. Check the installation regularly.

LK 521 MultiFill® 25
for heat pumps, max. 12 kW

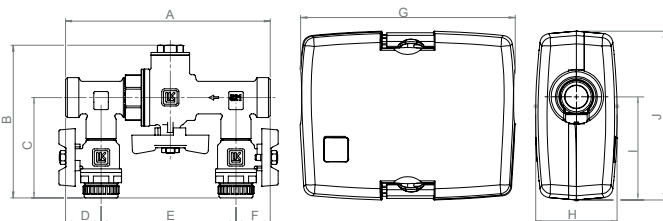
LK 521 MultiFill® 32
for heat pumps, max. 30 kW

LK 521 MultiFill® 50
for heat pumps, max. 50 kW

CAPACITY DIAGRAM



LK 521 - Male Thread



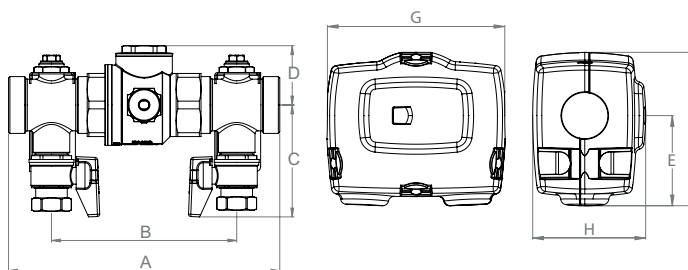
Article no.	Dim. 1	Dim. 2	Kvs m ³ /h	A mm	B mm	C mm	D mm	E mm	F mm	G mm	H mm	I mm	J mm	Weight kg
091480	M 1"	M ¾"	12.5	170	127	83	29	108	29	218	83	105	171	1.3
091481	M 1¼"	M ¾"	22	173	136	87	29	115	29	218	83	105	171	1.7

Dimension 1 - Pipe connection to collector hose

Dimension 2 - Connection for filling of fluid

Dimensions according to dimensional drawings are guidance and not part of the specification

LK 521 - Male thread



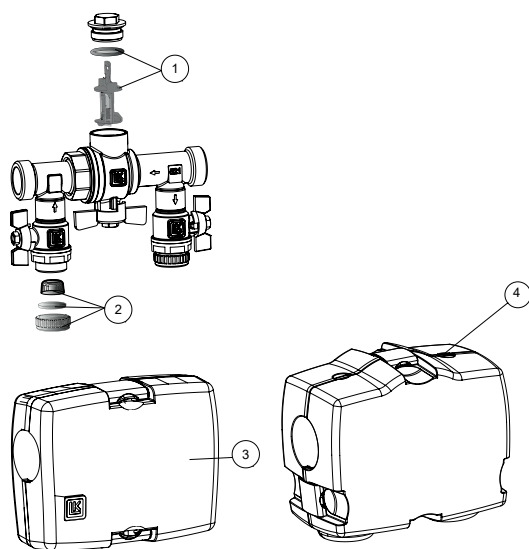
Article no.	Dimension	Dimension 2	Kvs m ³ /h	A mm	B mm	C mm	D mm	E mm	F mm	G mm	H mm	Weight kg
091483	M 2"	M 1"	40	284	178	118	49	156	265	308	195	4.6

Dimension 1 - Pipe connection to collector hose

Dimension 2 - Connection for filling of fluid

Dimensions according to dimensional drawings are guidance and not part of the specification

SPARE PARTS AND ACCESSORIES



Article no.	Article	Position
095070	Filter and sealing DN 25	1
095071	Filter and sealing DN 32	1
095073	Cap, filter and sealing	2
095072	LK Insulation, 521 DN 25-32	3
187309	LK Insulation, 521 DN50	4

LK ARMATUR AB

Garnisonsgatan 49
SE-254 66 Helsingborg
Sweden

Phone: +46 (0)42-16 92 00

Fax: +46 (0)42-16 92 20

info@lkarmatur.se

order@lkarmatur.se

FOR THE SIMPLER, SMARTER EVERYDAY

Simpler. Smarter. More sustainable. At LK, we believe there's a better way to do everything. It's a belief all of us at LK apply to every product and solution we create – from water, heating and hydronic solutions to pipe extrusion.

Our **LK Armatur** business area is a leader in Europe, producing millions of valves per year for the global HVAC market. Beyond individual products, we understand how all parts interact in your complete application. From standard to sophisticated customizations of valves, controllers, components and prefabricated units, our full-spectrum expertise makes it easy to get the results you need today, while anticipating your needs tomorrow.

