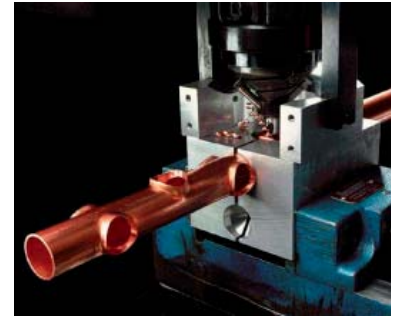


Collaring

Copper pipe



Max pressure: 1.6 MPa
Max working temp: 120 °C

Design

Customised manufacture of pipe designs with collared T-junctions, which means that the number of soldered joints can be reduced.

A radius is cut out of the joining pipe to avoid disturbing the flow in the junction (Notching).

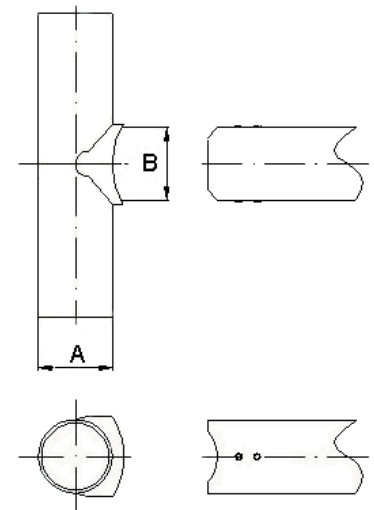
Products are manufactured from customer drawings.

Copper pipes of dimensions 12–42 mm.

Design principles are as below.

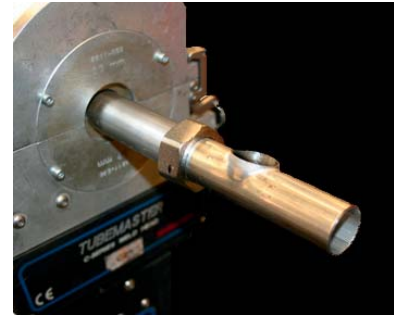
Design principles for copper pipes

Collaring diameter internal Ø (B)		6	8	10	12	15	18	22	28	35	42
Pipe dimensions (A)	12	0.8	1.0	1.0	1.0						
	15	0.8	1.0	1.0	1.0	1.2					
	18	0.8	1.0	1.0	1.0	1.2	1.2				
	22	0.8	1.0	1.2	1.2	1.5	1.5	1.5			
	28	0.8	1.0	1.2	1.2	1.5	1.5	2.0	1.5		
	35	0.8	1.0	1.2	1.2	1.5	1.5	2.0	2.0	1.5	
	42	0.8	1.0	1.2	1.2	1.5	1.5	2.0	2.0	2.0	2.0
		Wall thickness (mm)									



Collaring

Stainless steel pipes



Max pressure: 1.6 MPa
Max working temp: 120 °C

Design

Customised manufacture of pipe designs with collared T-junctions, which means that the number of welded joints can be reduced.

If pipes are planed, orbital or butt welding can be done.

Products are manufactured from customer drawings.

Steel pipes of dimensions 12–42 mm.

Design principles are as below.

Design principles for steel pipes

Collaring diameter internal Ø (B)		10	12	15	18	22	28	35	42	
Pipe dimensions (A)	12	1.0	1.0							
	15	1.0	1.0	1.0						
	18	1.0	1.2	1.2	1.0					
	22	1.0	1.2	1.2	1.2	1.2				
	28	1.0	1.0	1.0	1.0	1.0	1.0			
	35	1.0	1.0	1.0	1.0	1.4	1.2	1.2		
	42	1.0	1.2	1.2	1.2	1.4	1.4	1.4	1.2	
		Wall thickness (mm)								

