

Combination valve for filling

LK 520



Combination valve including insulation, for filling, mixing and filtering with refrigerant fluid.

Max. working pressure: 1,0 MPa
 Working temperature:
 -20°C till + 80°C
 Glycol and ethanol mixture:
 Max 50%

Design

Brass valves EN 12165 CW617N (MS58). Filter in stainless steel EN 10088 1.4310. Mesh opening 1,0 mm.

The combination valve has 2 connections with male thread G $\frac{3}{4}$ for filling with refrigerant fluid and 2 pipe connections with male thread as per part list. Insulation of expanded polystyrene (EPS).

Insulation

Dim.	L	W	H
25	213	170	83
32	231	200	90

Fitting/installation

The arrow on the valve housing indicates the direction of the flow. The male thread has to be sealed in the usual manner.

To avoid condensate precipitation and possible icing, the combination valve should be insulated with the accompanying insulation.

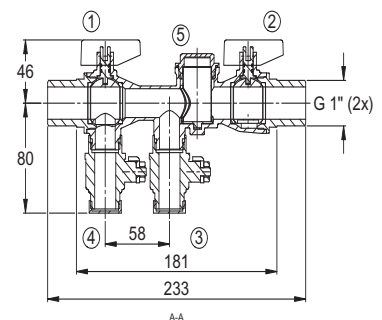
On filling with refrigerant

Close valve 1. Connect the refrigerant fill to valve 3 according to the flow arrow. Connect the refrigerant return to valve 4. After filling, close the filling valves 3 and 4, open valve 1.

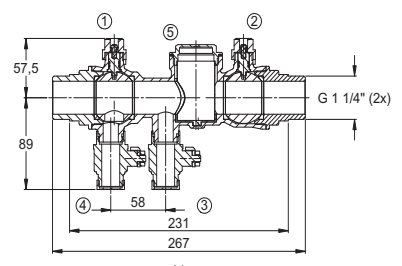
Cleaning the filter

Close the valves 1 and 2, unscrew the filter cover 5, clean the filter. When refitting, the tap below the filter holder should be fitted in the hole provided in the filter housing. Fill with a few centiliters of refrigerant to prevent air entering the system.

LK 520-25



LK 520-32



Operation and maintenance

Apart from cleaning the filter, no maintenance is required. Check the installation regularly.

Article	Dimension	Art. no	Pack qty	Kvs (m ³ /h)
520-G25	G1 male x G1 male	091043	1	10
520-G32	G1 $\frac{1}{4}$ male x G1 $\frac{1}{4}$ male	091193	1	22